



Sidewinder Slide
Assembly Manual

Sidewinder Slide Assembly Manual

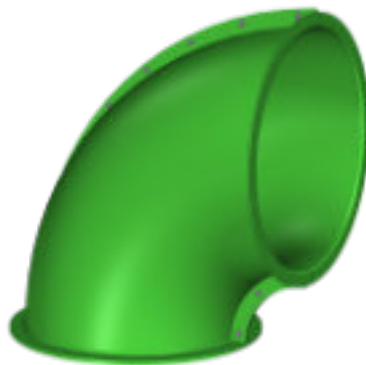
Tools Needed for Assembly

- Socket Set with 1/2" Sockets
- 1/2" Wrench
- Socket Adapter
- Impact Driver

Parts



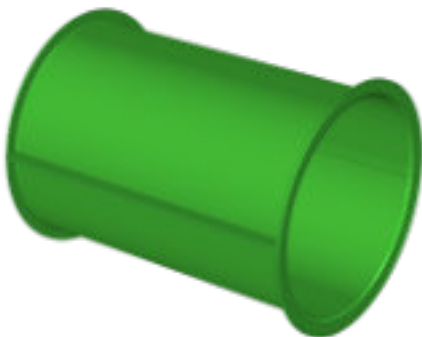
(1) Entry Plate



(1) Assembled Elbow Tube



(1) Tube Slide Exit



Assembled Straight Tubes



Straight Tubes consist of a top and bottom half.



Elbow Tubes consist of a top and bottom half.

Hardware



5/16"x1" Bolts



3/8" Washers



5/16" Lock Nuts



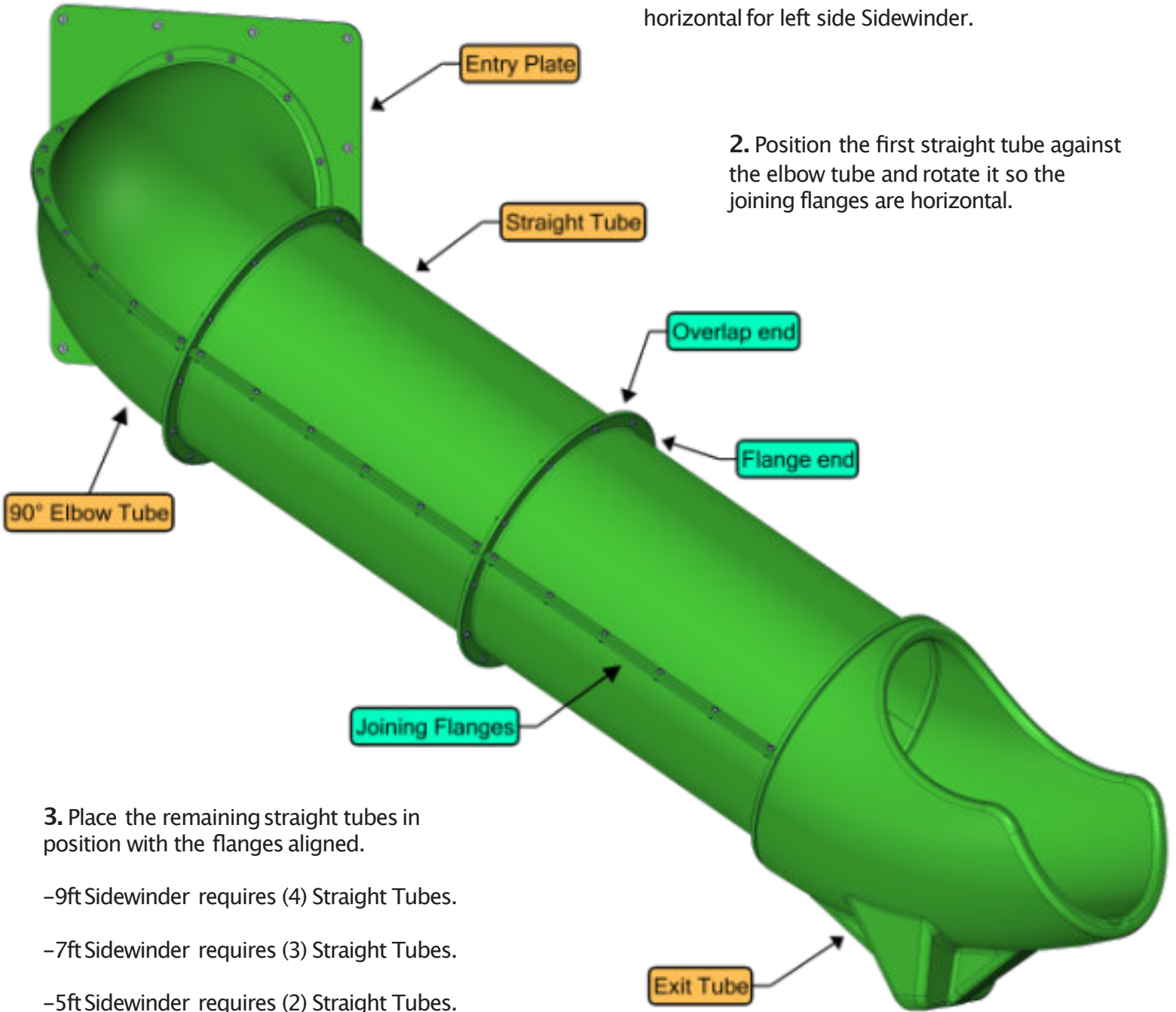
5/16"x1 1/2" Lags

Quick Reference Guide

1. Turn Elbow Tube CW one bolt hole from horizontal for right side Sidewinder.

Turn Elbow Tube CCW one bolt hole from horizontal for left side Sidewinder.

2. Position the first straight tube against the elbow tube and rotate it so the joining flanges are horizontal.



3. Place the remaining straight tubes in position with the flanges aligned.

-9ft Sidewinder requires (4) Straight Tubes.

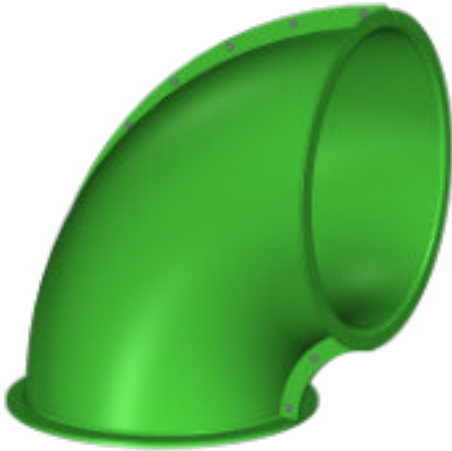
-7ft Sidewinder requires (3) Straight Tubes.

-5ft Sidewinder requires (2) Straight Tubes.

-3ft Sidewinder requires (1) Straight Tube.

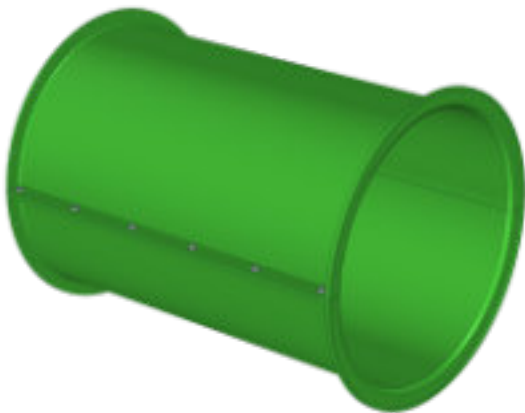
4. Place the tube slide exit against the last straight tube and align it.

Assembly Process



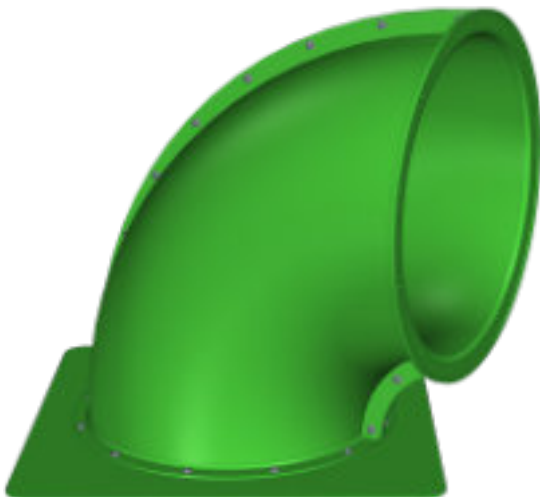
Step 1.

Assemble the 90° elbow tubes. Insert (12) Bolts with Washers through holes on overlap side of joining flanges. Secure Bolts with (12) Washers and Locknuts then tighten with tools. Make sure overlaps and flanges are at same ends on both halves before assembly.



Step 2.

Assemble the straight tubes. Insert (6) Bolts with Washers through holes on overlap side of joining flanges. Secure Bolts with (6) Washers and Locknuts then tighten with tools. Make sure overlaps and flanges are at same ends on both halves before assembly.



Step 3.

Place the Elbow Tube on top of the Entry Plate then turn the Elbow Tube so it is aligned with the Entry Plate.

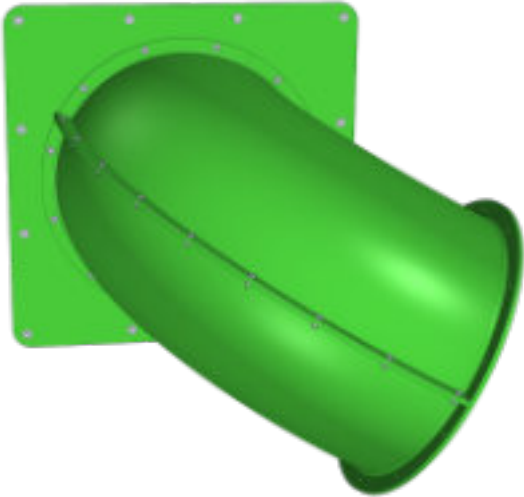
Turn the Elbow Tube CW one bolt hole for a left side Sidewinder.

Turn the Elbow Tube CCW one bolt hole for a right side Sidewinder.

Secure the flange end of the Elbow to the Entry Plate using (12) Bolts with Washers.

Secure the Bolts with (12) Locknuts on the Elbow flange side then tighten all the bolts and nuts.

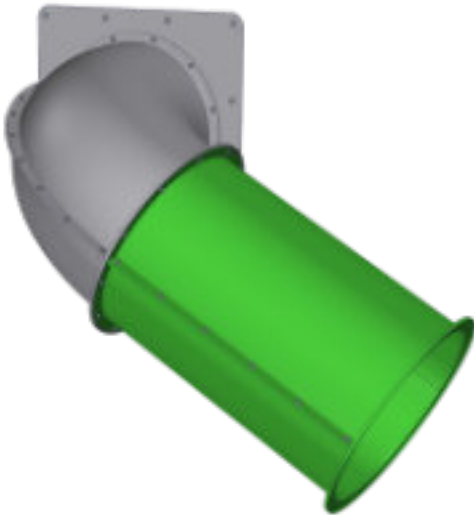
Assembly Process



Step 4.

Center the Entry Tube on the platform at the slide opening with the bottom of the tube hole flush at deck level.

Fasten the Entry Plate to the structure using (12) Lag Bolts with Washers.

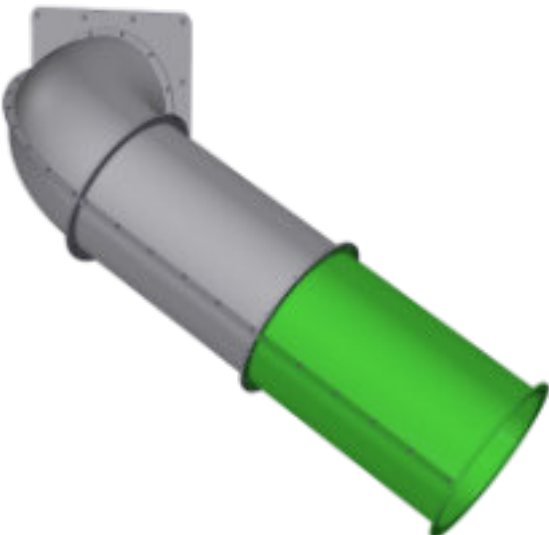


Step 5.

Secure the flange end of the first Straight Tube to the overlap end of the 90° elbow tube.

Align the joining flanges then fasten the straight tube using (12) Bolts with Washers.

Fasten the Bolts with (12) Locknuts.



Step 6.

Repeat the last step to install the remaining tubes.

The following deck heights will determine the amount of straight tubes.

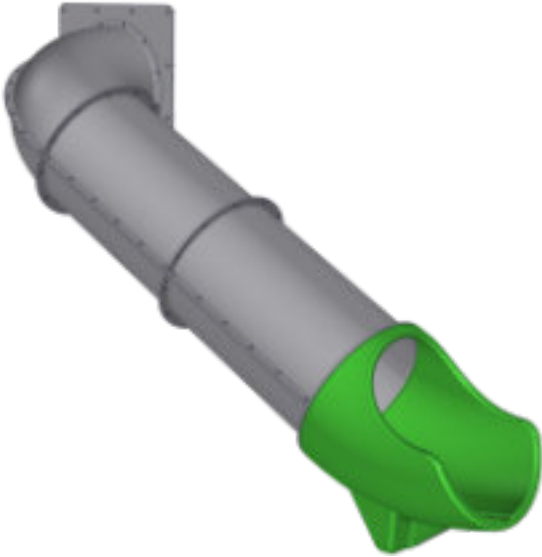
-9ft Sidewinder requires (4) Straight Tubes.

-7ft Sidewinder requires (3) Straight Tubes.

-5ft Sidewinder requires (2) Straight Tubes.

-3ft Sidewinder requires (1) Straight Tube.

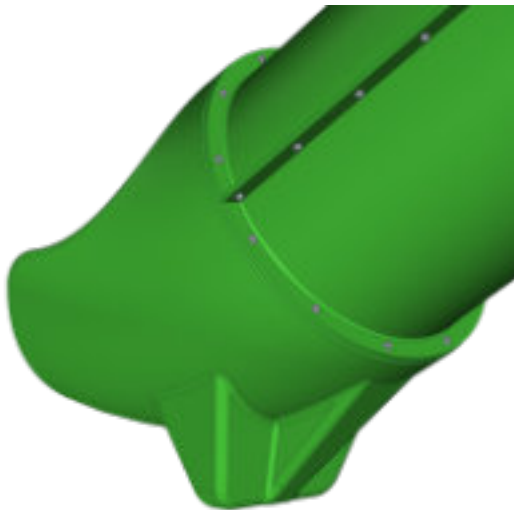
Assembly Process



Step 7.

Install the Tube Slide Exit section against the last tube.

The last Straight Tube will have the overlap trimmed short to fit the Tube Slide Exit.



Step 8.

Secure the overlap end of the last Straight Tube to the Tube Slide Exit with (2) 5/16" bolts with washers.

Fasten two bolts into the pressed nuts near the bottom of the Exit making sure the exit is level on both sides.

Install 5/16"x1 1/2" lags with washers through the remaining ten holes in the Tube Flange into the plastic of the Exit Section, taking care not to overtighten the lags in the plastic.

Safety Information

Safety Precautions

- Make sure to properly follow instruction manual for your specific slide.
- Make sure the play structure that you are attaching the slide to is sturdy and able to support this type of equipment.
- Check and make sure all hardware is secured properly. This will need to be done as routine maintenance program on all playground equipment.
- This product is made to be used as a playground slide exclusively.
- If for any reason installation can not be completed throughly; do not leave slide or opening on play equipment in a unsafe manner to which injuries may occur.
- Please check with CPSC's recommendation for safety on their web site and follow their most recent handbook.

www.cpsc.gov/s3fs-public/324.pdf



Proper installation and safety is the responsibility of the installer.